



Workshop Information

Fitting instructions for conversion kit SA519

This mulch kit is only suitable for the following rear discharge petrol mowers:

- with 43cm cutting width;
- only for version with new housing

43-2 A (SA168)	43-PRO (SA344, SA1044)
43-2 VARIO (SA126)	R43VT (SA389)
43-4 E (SA178)	C43 (SA377, SA1019)
43-4 EA (SA179)	R43VE (SA384, SA984)
43-A Economy (SA263, SA763, SA830, SA1142)	R43S (SA378, SA678)
43-OHC A (SA184)	R43V (SA383)
43-OHV VARIO (SA248)	R43VO (SA388)
43-VARIO (SA902)	
43-VARIO E (SA979)	



Always have an authorised workshop carry out the conversion of the mower to a mulching system. A wrongly assembled cutting blade coupling or a blade screw that is tightened too tightly or too loosely can allow the cutting blade bars to become loose and cause severe injuries.



Before you start mowing, always check the condition and firm attachment of the cutting blade. The blade attachment screw must always be tightened by an authorised workshop. If the blade screw is too tight or too loose, the blade coupling and cutter bar can become damaged or loose which can lead to serious injuries.

A worn or damaged blade must always be replaced.

Only use genuine cutter bars for replacement. Non-equivalent spare parts can damage the machine and are a safety hazard.

Replacement cutting tool must be marked permanently with the name and/or company logo of the manufacturer or supplier and the part number.



Replacement, sharpening and balancing of the cutting blade bar must always be carried out by an authorised workshop.

An improperly ground and imbalanced cutting blade can cause strong vibrations and damage the lawn mower.

The cutting edges of the cutting blade may be ground only until the marking on the cutting blade (ring) has been reached.

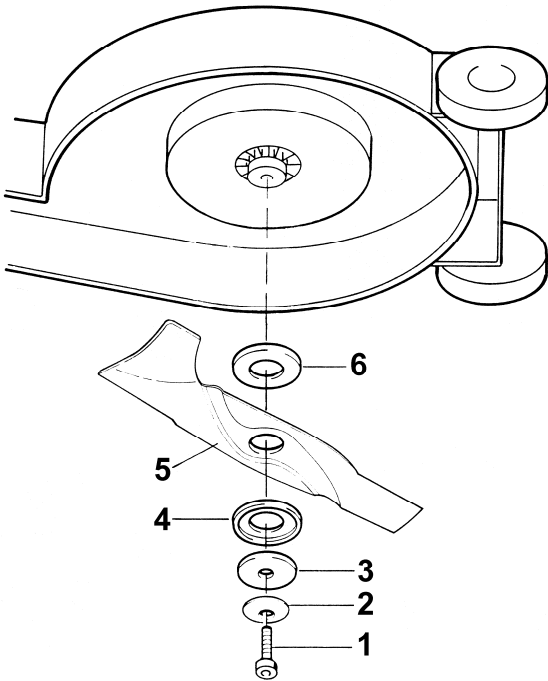
A blade on which the wear limit (marking) has been exceeded can break off and be spun away, which can cause severe injuries.

The conversion kit contains the parts: 7*, 10*, 11*, 12*, 13*

CAUTION

Hazard through leaking petrol and oil!

Always make sure you turn the lawn mower over properly (see the operating manual section "Mower care and maintenance").



1. Turn the lawn mower over in accordance with the operating manual. Close the fuel tap first (if appropriate).
Secure the mower in its raised position!
2. Insert a hexagon socket screw key into the cleaned cutter blade attachment screw (1) and use it to loosen the screw (1) anticlockwise - keep hold of the blade.

Then remove

- Cutter blade attachment screw (1),
- Plate clamping disc (2),
- Washer (3),
- Sliding washer (4),
- Cutter bar (5) and
- Sliding washer (6), one after the other.

3. Pull off the fan assembly .

4. Loosen the four DUO Taptite screws 6.0x14 cm to remove the fan housing.

5. Replace the fan housing by the cover (7*) from the conversion kit, and fix in place using the four DUO Taptite screws (8) 6.0x14 cm.

6. Mount the flange assembly (10*) according to the drawing.

NOTE

Before mounting the flange assembly (10*) make sure that the bushing (9) is inserted in the flange (only applies to types 43-2 A, 43-OHV VARIO, 43-4 EA, 43-2 VARIO, 43-VARIO, 43-VARIO E, R43V, R43VO, R43VE, R43VT).

7. Insert the sliding washer (6), mulching blade (11*) into the tappet (from flange assembly 10*) as shown, push the cutter bar (12*) in place, turned through 90°.

NOTE

Check the sliding washers for wear and replace if necessary.

Ensure that the peripheral edge of the sliding washers points away from the cutter bar.

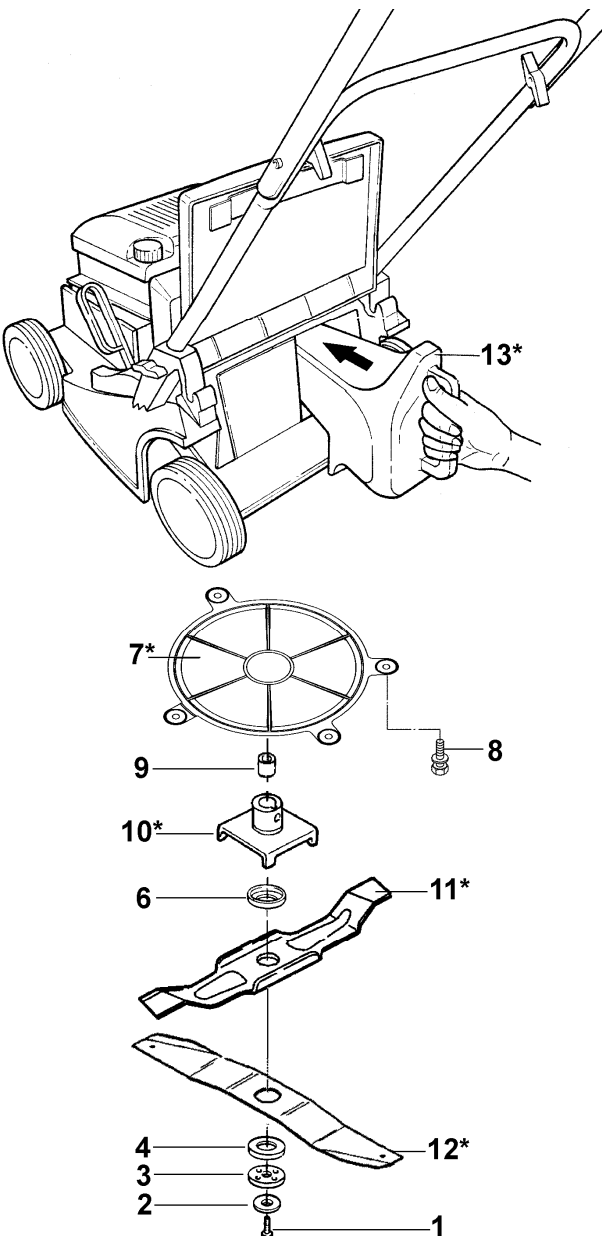
The ends of the mulching blade pointing upwards and those of the cutter bar must face the housing.

The two blades must be positioned as shown in relation to the tappet.

8. Insert the sliding washer (4) and washer (3) into the cutter bar (12*).

NOTE

The driving tag on the washer (3) must be positioned in the respective bore holes of the flange assembly (10*).



9. Place the plate clamping disc (2) onto the cutting blade screw (1). Screw in the cutting blade screw and tighten using 40-45 Nm.
10. Fit the mulching insert (13*). To do this, open the flap, remove the grass collection bag, push the mulching insert into the ejection channel and close the flap again.

After fitting, the following components must still be available for reversion at a later date: fan housing, fan assembly and standard cutter bar.