



## Workshop Information

### Fitting instructions for conversion kit BSA633

This mulch kit is only suitable for the following professional lawn mowers with side discharge:

- 52-PRO S K A PLUS (SA1611)
- C52KS (SA1615)
- 52-PRO S A (SA1649)

The following parts must be ordered for the conversion of this equipment (SA1649):

- Conversion kit BSA633 + V-belt SAU11645



Always have an authorised workshop carry out the conversion of the mower to a mulching system. A wrongly assembled cutting blade coupling or a blade screw that is tightened too tightly or too loosely can allow the cutting blade bars to become loose and cause severe injuries.



Before you start mowing, always check the condition and firm attachment of the cutting blade. The blade attachment screw must always be tightened by an authorised workshop. If the blade screw is too tight or too loose, the blade coupling and cutter bar can become damaged or loose which can lead to serious injuries.

A worn or damaged blade must always be replaced.

Only use genuine cutter bars for replacement. Non-equivalent spare parts can damage the machine and are a safety hazard.

Replacement cutting tools must be marked permanently with the name and/or company logo of the manufacturer or supplier and the part number.



Replacement, sharpening and balancing of the cutting blade bar must always be carried out by an authorised workshop.

An improperly ground and imbalanced cutting blade can cause strong vibrations and damage the lawn mower.

The cutting edges of the cutting blade may be ground only until the marking on the cutting blade (ring) has been reached.

A blade on which the wear limit (marking) has been exceeded can break off and be spun away, which can cause severe injuries.

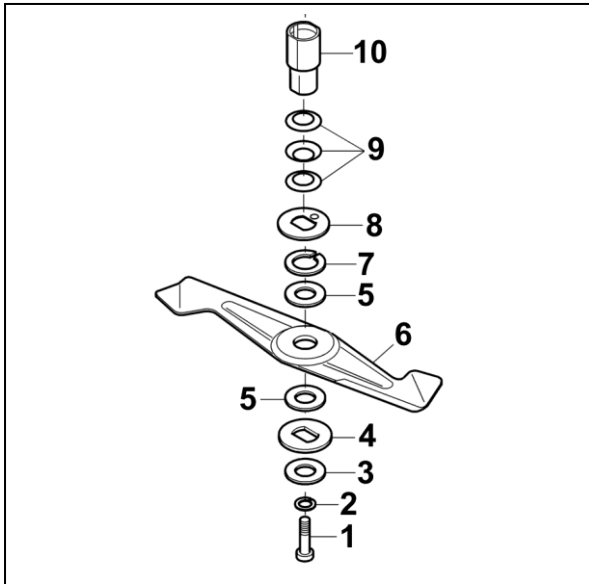
The conversion kit contains the parts: 17\*, 18\*, 19\*, 20\*, 21\*, 22\*, 23\*

#### CAUTION

Hazard through leaking petrol and oil.

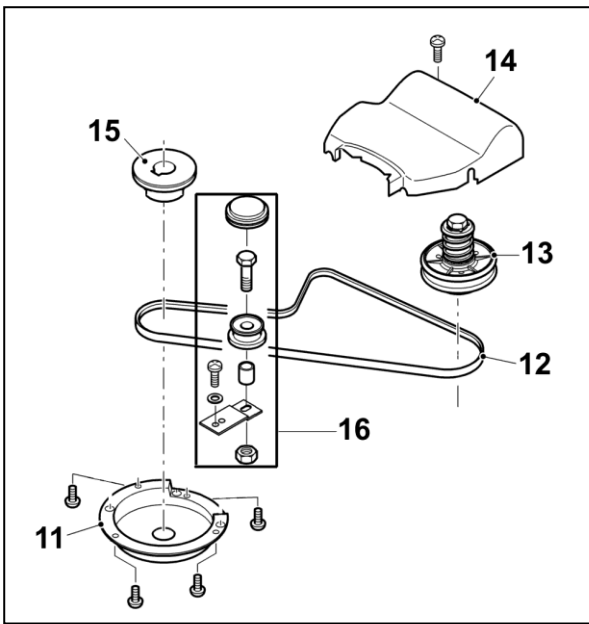
Always make sure you turn the lawn mower over properly (see the operating manual section "Mower care and maintenance").

1. Turn the lawn mower over in accordance with the operating manual. Close the fuel tap first (if appropriate). Secure the mower in its raised position!
2. Insert a hexagon socket screw key into the cleaned cutter blade attachment screw (1) and use it to loosen the screw (1) anticlockwise - keeping hold of the blade.

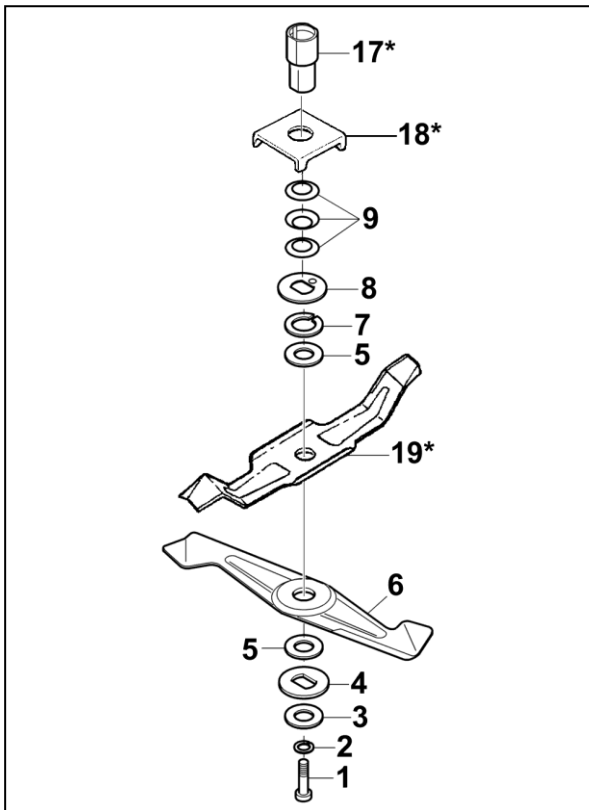


3. Remove the following one after the other
  - Blade attachment screw (1),
  - Circlip (2),
  - Washer (3),
  - Pressure washer (4),
  - Coupling facing (5),
  - Cutter bar (6) and
  - Coupling facing (5).
4. Remove the snap ring (7) from the blade flange (10), pull the disc springs (9) and pressure washer (8) off.

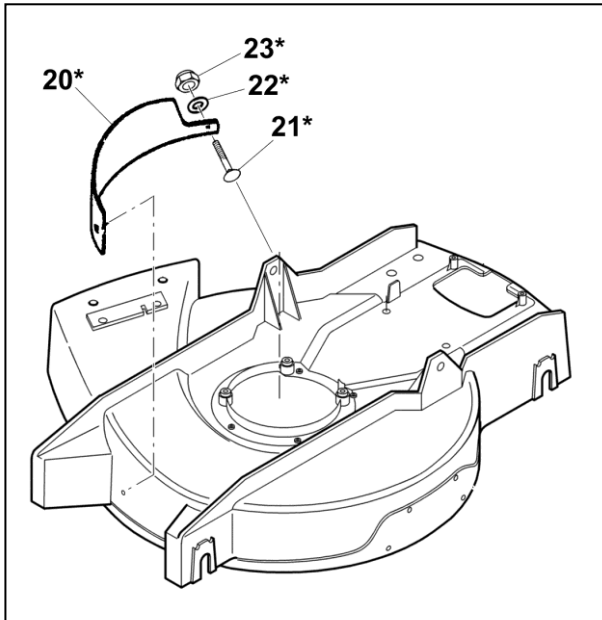
**Points 5. - 9. only apply to the model 52-PRO S A (SA1649):**  
**To reduce the driving speed to 3.3 km/h, the V-belt has to be replaced as well; order no. SAU11645**



5. In the blade compartment, remove the cover (11) to the underside of the engine.
6. Take the belt cover off (14). Relax the V-belt (12) and take it off the engine V-belt (15) and V-belt pulley (13).
7. **It is possible to further reduce the driving speed to 3.03 km/h.**  
The deflection assembly (16) must be completely removed for this.
8. Fit the new V-belt SAU11645 again in reverse order.
9. Attach the covers (11) and (14) again.
10. Pull the blade flange (10) off the drive shaft and replace it by the flange (17\*) from the conversion kit.
11. Mount the tappet (18\*) according to the drawing.



12. Assemble and mount the three disc springs (9\*) reciprocally, as shown in the diagram, put on the pressure washer (8\*) and secure using the snap ring (7\*).
  13. Push the coupling facing (5) on, insert the mulching blade (19\*) into the tappet (18\*) as shown, push the cutter bar (6) in place, turned through 90°.
- NOTE**  
**Check the coupling facings for wear and replace facings if necessary!**  
**The ends of the mulching blade pointing upwards and those of the cutter bar must be facing the housing**  
**The two blades must be positioned as shown in relation to the tappet.**
14. Put coupling facing (5), pressure washer (4), washer in place.  
**NOTE**  
**Make sure that the coupling facing and pressure washer pushed on last are aligned to one another.**



15. Place the snap ring (2) onto the cutting blade screw (1). Screw in the cutting blade screw and tighten using 40-45 Nm.
16. Before the cover plate (20\*) can be attached, two holes must be drilled into the housing. The markings on the housing must be heeded for the exact bore hole positions.
17. Insert the cover plate (20\*) into the housing from the inside in such a way that the two bore holes in the cover plate are aligned with the bore holes in the housing.
18. Insert the flat round screws (M6x20) (21\*) into the bore holes from the inside (cutting space), put the washers (22\*) in place and tighten using the two self-locking nuts (23\*).

After fitting, the blade flange (10) is left over for possible reversion later.

If the driving speed has been reduced on the SA1649, the V-belt SA36523 and the deflection assembly (16) may have to be installed again if the equipment is reconverted later.